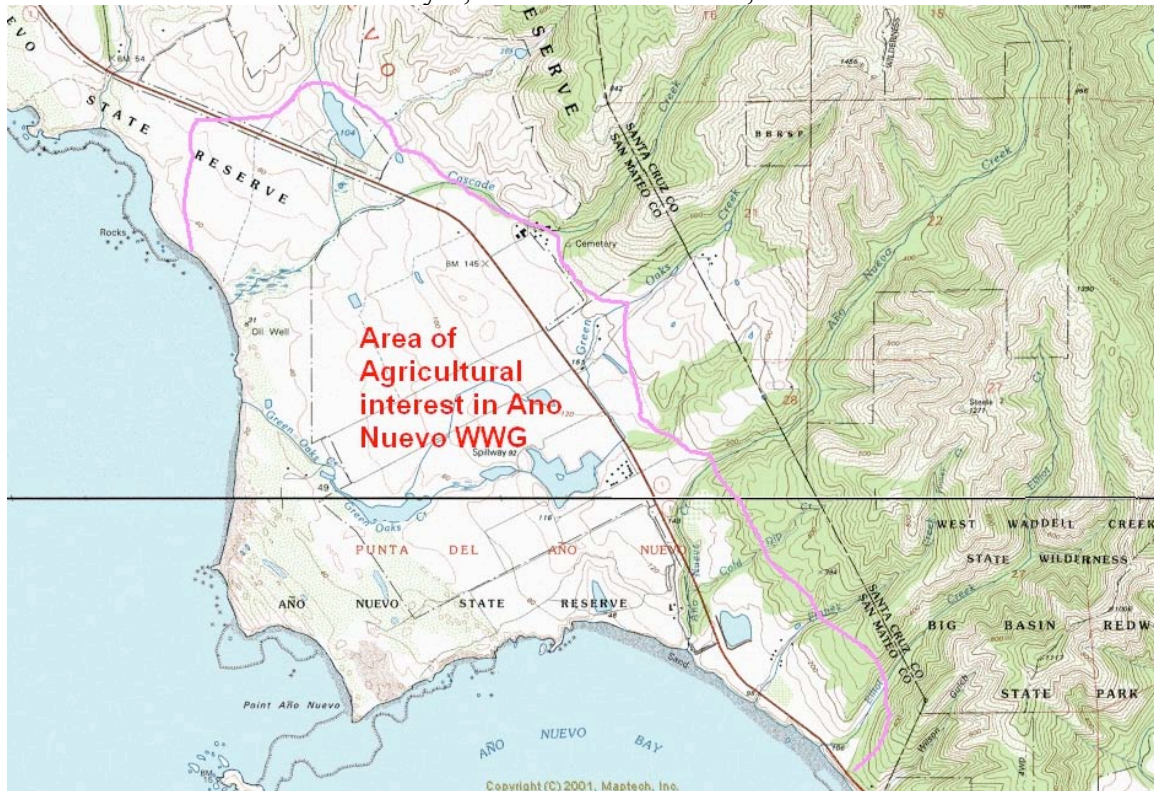


Ano Nuevo Watershed Working Group San Mateo County

Annual Watershed Report

January 1, 2005 – December 31, 2005



Watershed-Level Summary Statistics	
Name of Watershed	Ano Nuevo
Square miles of land the watershed drains	15
Total acreage of watershed	9717
Total agricultural acreage in watershed	300
Rangeland acres	
Row crop acres	300
Percent watershed land use in ag production	3%
Number of ag operations in watershed	5
Number of ag operations in Program	5
Percent participation (by operation)	100%
Acres of ag in program	300
Percent participation (by acreage)	100%
# of operations through short course	4 (one operation is in first year of production)
#of operations with completed farm plan	4

Note; Source of watershed acreage is UC Ag Extension Service report dated Jan 1956. Agricultural acreage shown is based on an estimate of this year's production.

Location of Watershed:

The Ano Nuevo Watershed is located in the southern portion of coastal San Mateo County approximately 35 miles south of San Francisco. The watershed is comprised of several small creeks, each of which drains into the Ano Nuevo State Reserve. . This “watershed” for purposes of the Watershed Group, includes Cascade Creek, Green Oaks Creek, Ano Nuevo Creek, Finney Creek and Elliot Creek. Each of these creeks empties into the Pacific Ocean (part of the Monterey Bay National Marine Sanctuary). All of these creeks lie within unincorporated areas of San Mateo County.

The creeks of the Ano Nuevo Watershed are part of the USGS Cataloging Unit Basin Name; San Lorenzo - Soquel. The Hydrologic Area Name is Ano Nuevo. The Calwater Unit # is 304.20. This watershed is a part of Region 3 of the California Regional Water Quality Control Board.

Description of Watershed:

The Ano Nuevo watershed (for purposes of this watershed group) includes several distinct drainages. Elevations rise from sea level at the mouth to 1600 feet at the headwaters. The natural plants community types found in the watershed range from coastal strand vegetation near the Pacific Ocean, to Coastal mixed conifers in the upper watershed. In recent years, the native population of Monterey Pines, one of the species of tree found in the upper reaches of the watershed have been impacted by disease and are dying. The riparian forest found along the creek corridor is a mix of alders and a variety of willow species. The watershed is characterized by steep slopes and canyons in the upper reaches and near level bottomlands. Lands adjacent to the lower reaches have historically been used for agriculture.

The Ano Nuevo watershed provides habitat for a diverse population of wildlife, including rare, threatened and endangered species such as the the red-legged frog, the San Francisco garter snake. At the ocean interface lies the Ano Nuevo State Reserve, a marine habitat for numerous marine mammal species (Elephant seals) and an active docent led public interpretive area.

The watershed is currently not listed as impaired under Sections 303(D) for impaired water bodies. Precipitation within the watershed areas range from approximately twenty-six inches annually on the coast to 42 inches in the upper reaches. Approximately eighty percent of the total precipitation occurs between November and March.

Ownership of land includes of publicly owned land (California State Parks) in the headwater area, privately owned property used as rural residential, privately owned agricultural lands and publicly owned lands at the ocean (Ano Nuevo State Park and Reserve).

Principal land uses include recreational open space (State Parks - Beach), undisturbed upland slopes and irrigated agriculture.

Agricultural uses include floriculture (field flowers), vegetables (including Brussel Sprouts, pumpkins, winter squash), vine berry crops (kiwi, blackberry, ollalaberry) and conventional farming as well as organic farming operations.

Watershed Working Group:

The Ano Nuevo Watershed Working Group (WWG) was established in November 2002. At that time, By-Laws were created and adopted and a Mission Statement was agreed upon.

Meetings are held at the production barn of Ano Nuevo Flowers. Dates and times are announced by notice mailed to all cooperators and all growers in the watershed.

This watershed group meets as needed to address local issues or to be updated on continuing efforts.

Participation:

This WWG includes all of the production ag in the watershed - a total of 5 operations. All five growers and one additional land manager participates.

Watershed Projects:

1. Cover Crop Demonstration Projects
 - a. Four projects (multiple sites) –sponsored thru the FB
2. WinPST usage by two of the conventional growers (introduced by NRCS and adopted by growers)
3. EQIP contracts with several of the WWG members
4. Two of the conventional growers participate with the Nutrient and Irrigation portions of the “Ag Mobile Lab” grant which conducts field work with the growers regarding irrigation efficiency and nutrient management and tracking throughout the growing season.

Conservation Practices currently in use:

1. Cover crops are widely utilized (weather permitting).
2. Riparian corridors are left intact
3. Amendments to row arrangement suggested by NRCS to reduce the rate of flow over production fields have been implemented.
4. Grass filter areas at the “bottom” of fields.
5. WinPST usage for pesticide fate tracking

All of the conventional farming cooperators are regularly inspected by the County Ag Commissioner’s office for proper storage and application of chemical products (pesticides or herbicides).

Summary of Accomplishments

1. This is the only San Mateo County WWG which lies within Region 3. Growers are participating with the Region 3 Ag Waiver process.

Goals which had been set by the WWG for the year 2005 / Action Items & Status Report Goals for 2005

- Outreach to agricultural land owners, operators and managers
 - Status; The WWG includes all of the operations within the watershed.
- Participate in Cooperative Extension Short Course on Non Point Source Pollution.
 - Status; A Short Course is planned for Half Moon Bay in June 2006. One new organic farmer who will commence production this year plans on attending.
- Assist individual cooperators in development of “Self Assessments” and “Farm Plans” for Agricultural Non Point Source Pollution.
 - Status; Farm Plans have been developed and in this WWG, 4 of the operations have Conservation Plans in place
- Seek funding to assist in the implementation of beneficial conservation practices
 - Status;
 - Members of this WWG now have contracts with the NRCS re; EQIP.
 - Grant participation which helps with the costs associated with conservation practices; Cover Crop Program and Mobile Lab Program

Watershed-Specific Challenges

- This watershed group lies adjacent to the Ano Nuevo “Elephant Seal” preserve. It is important to continue to demonstrate that the agricultural operations do not impact the water quality of this region. Outreach to State Parks as well as continued implementations of conservation activities will continue to be an integral part of the business plans for these agricultural operations and a focal point for this WWG.
- This WWG lies in Region 3 which will continue to monitor Ag Waiver activities

Water Quality Data Report (summary)

- Surface water storage used for irrigation purposes (the reservoirs) are periodically monitored for water quality. Samples are sent out to labs for assessment.